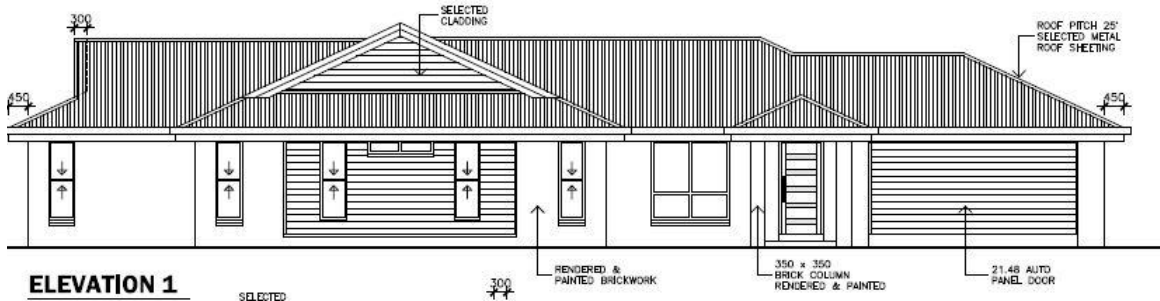


## Lot 551 Norfolk Drive North Harbour



### SPECIAL FEATURES

- Beautiful 4-bedroom residence designed for function and style
- Master Bedroom with ensuite, double vanity and walk in robe
- 3 additional double bedrooms with built in sliding mirror door robes
- Centrally located Bathrooms with shower, bath and separate toilet
- Roller blinds to all opening windows & sliding doors. Slimline Venetians to wet areas.
- Light and open living and meals area that overlooks the beautiful under roof Alfresco area
- Designer gourmet kitchen with **Caesarstone** bench top inc. stainless steel dishwasher, 900mm free standing oven/gas cooktop and glass canopy range hood
- Separate internal laundry
- 7 TV points + 2 telephone points
- Fully tiled living & wet areas
- Carpeted bedrooms and robes
- Cold water tap to refrigerator in the kitchen
- LED lighting to all internal down lights
- Front Entrance Door – Corinthian Windsor Range Door with Translucent Glass
- Ceiling fans (alfresco included)
- Air conditioners 1 x 5.2 & 1 x 2.6 KW Fujitsu to Master bedroom and living room
- Large double garage with remote doors
- Security screens to all windows and doors (Invisguard to front window & entry door)
- Fully rendered and painted with Hardiplank Weatherboard cladding
- Fully insulated Colorbond metal roofing
- Garden Shed
- Wall sarking to all walls
- Fully fenced
- Fully turfed and landscaped - includes Palmetto turf and a 21 day Lawn care package (landscaping includes driveway, path, garden & letterbox rendered with street number)
- Full Termite treatment to frame, trusses, slab & penetrations
- Clothesline
- Double or Single side gate entry where allowable
- Natural Gas – to cooktop & HWS
- Built to cyclone standard (W41 wind rating)

Purchase Price	\$522,700
Less \$5000 deposit	-\$ 5,000
Less 20% Deposit	<u>\$ 99,540</u>
<b>Borrow – Principal &amp; Interest (20yrs)</b>	<b>\$ 418,160</b>

AT 47% (\$180K +) TAX RATE  
NET CONTRIBUTION PW.

Contributions per week based  
Residential Investment P&I 20yrs  
@ 4.29%

Tenant	\$410
<b>Tax Refund</b>	<b>\$166</b>
Investor	<b>\$196</b>