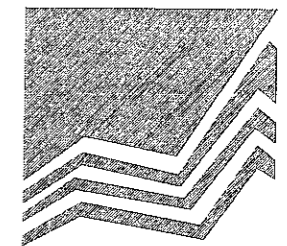


TERMITE TREATED FRAME



MANCORP
QUALITY HOMES

PO Box 1305
Caboolture Qld 4510
Office (07) 54952011
Fax: (07) 54952677
ACN: 065 955 179

NOTE :

- * ALL CONSTRUCTION TO BE IN ACCORDANCE WITH BUILDING CODE OF AUSTRALIA AND AS. 1684.2 - 1999 TIMBER FRAMING MANUAL.
- * WINDOW CODES DENOTE HEIGHT x WIDTH e.g. 1218 - 1200 HIGH x 1800 WIDE.
- * DIMENSIONS TO BE VERIFIED BY CONTRACTORS PRIOR TO PREPARATION OF SHOP DRAWINGS OR MANUFACTURING. DIMENSIONS TAKE PREFERENCE OVER SCALE.

© 2013 MANCORP

CLIENT
MANCORP QUALITY HOMES.

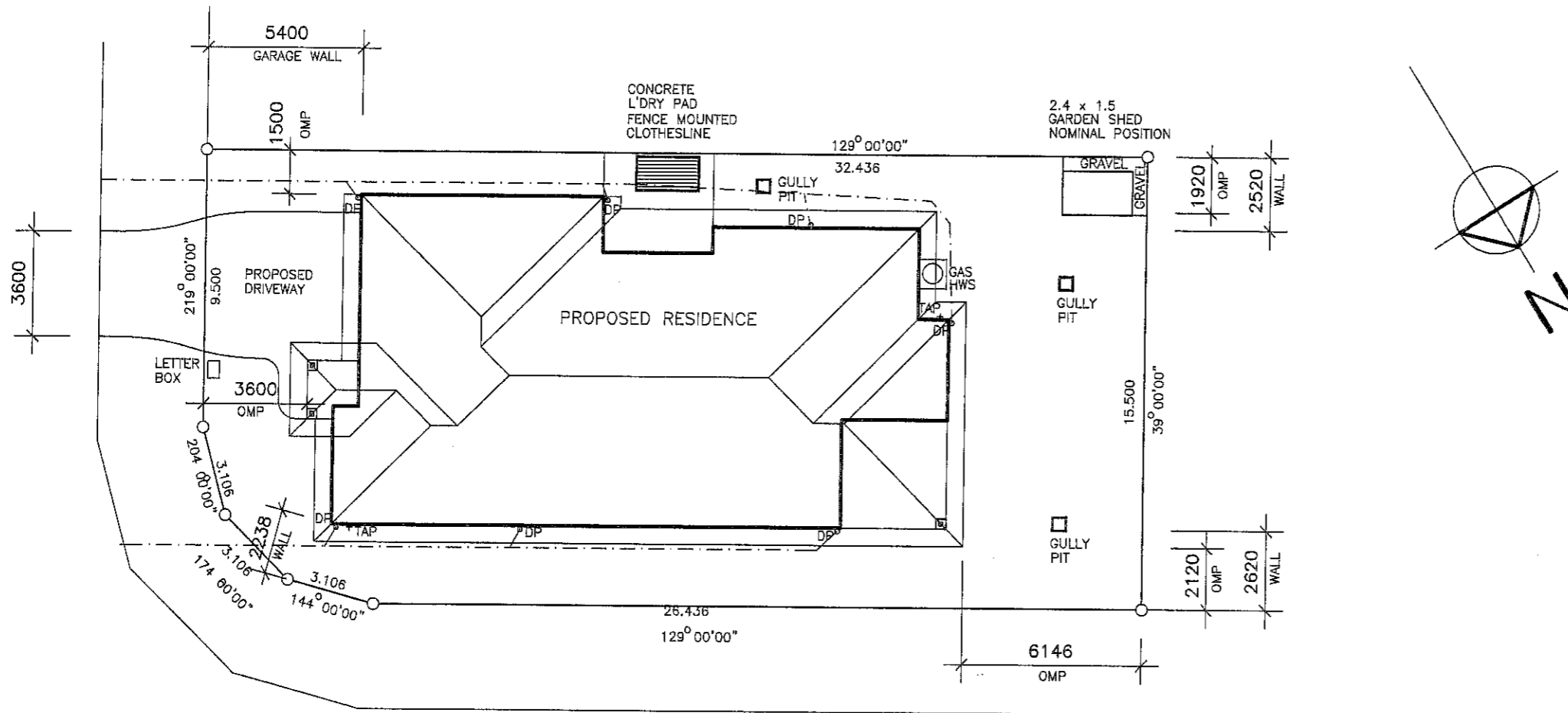
PROJECT
PROPOSED RESIDENCE

LOCATION
**LOT 299
BIRKDALE CIRCUIT,
NORTH LAKES.**

AMENDMENTS

ISSUE	DATE	DESCRIPTION
A	19/02/13	PRELIMINARY

DRAWN: A.WATTS	CHECKED:
DATE: 19/02/13	SCALE: AS SHOWN
JOB NO.	SHEET No. 1 OF 3



NOTE
DRAWING SYMBOLS USED ON THIS DRAWING ARE NOT TRUE REPRESENTATION OF ITEMS INCLUDED IN CONTRACT. REFER TO CONTRACT FOR SPECIFIED ITEMS

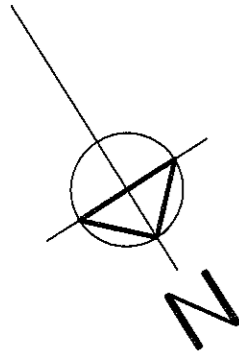
NOTE
STORMWATER TO DISCHARGE INTO EXIST. STORMWATER LINES & RETICULATE TO EXIST. LAWFULL POINT OF DISCHARGE
ALL STORMWATER LINES TO HAVE MINIMUM 100mm COVER.
STORMWATER LINES SHOWN ARE INDICATIVE ONLY
THE CONTRACTOR IS RESPONSIBLE TO ENSURE COMPLIANCE WITH AS.3500, AS.2870 AND BCA
LEVELS SHOWN REFERENCED TO AHD

AREA	
LIVING	199.9
PORCH	3.2
ALFRESCO	13.6
TOTAL	216.7sq.m.
AREA OF SITE	494 sq.m.
SITE COVER	43.9%

REAL PROPERTY DESCRIPTION
LOT 299 ON SP241576
PARISH : REDCLIFFE
COUNTY: STANLEY
AREA : 494 sq.m.

SITE PLAN

SCALE 1: 200

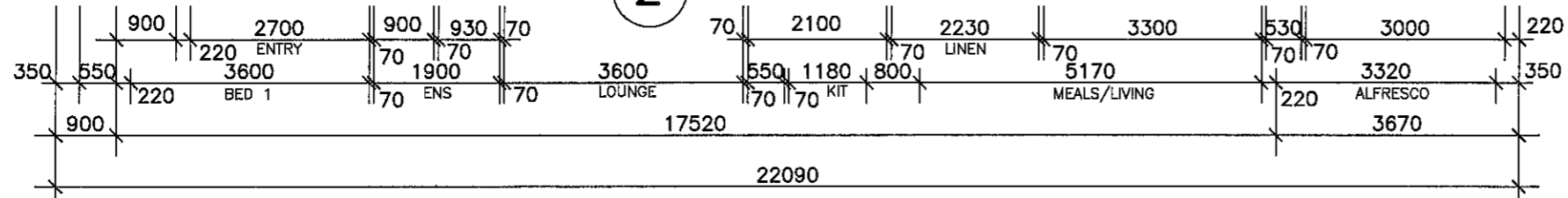
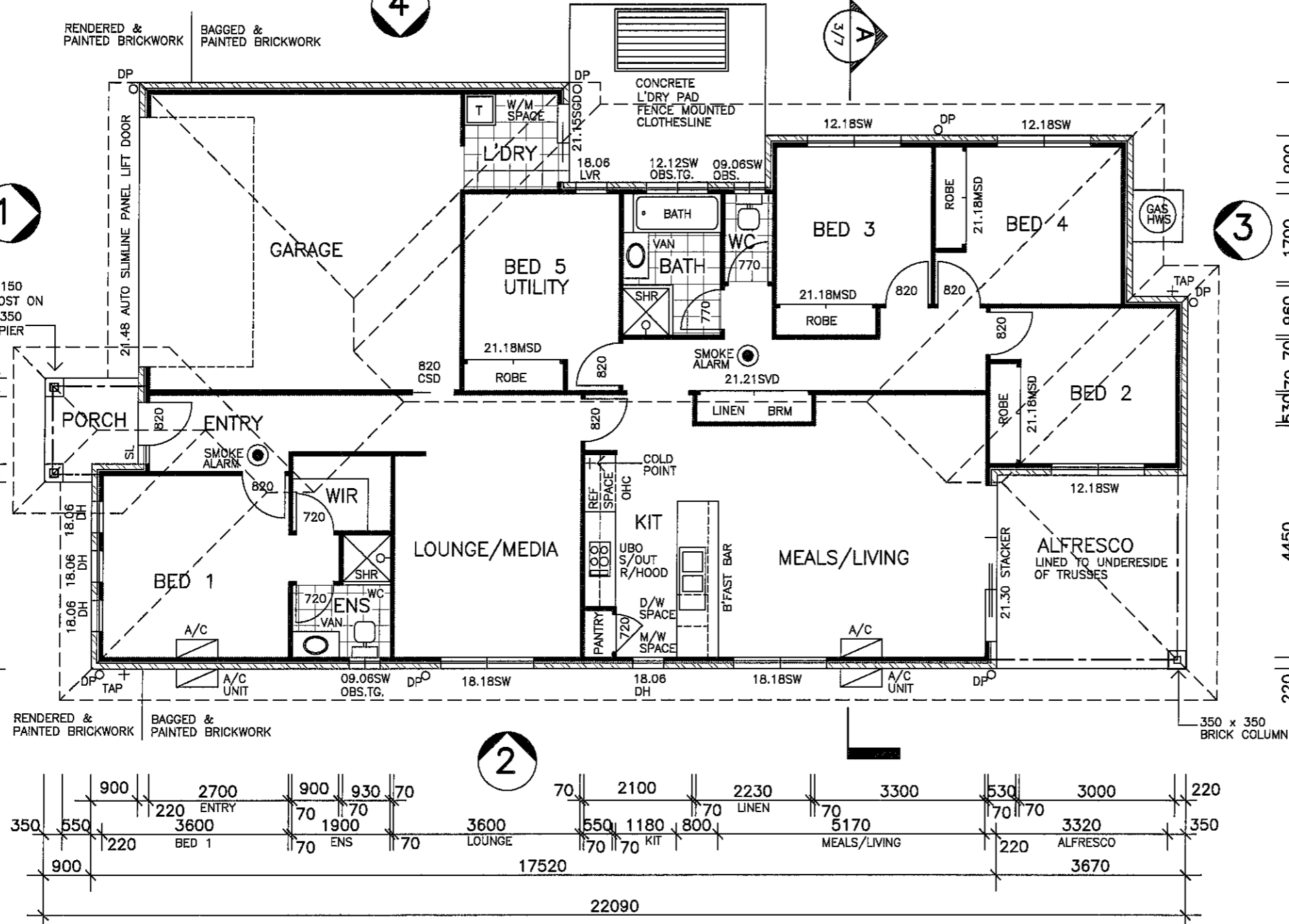
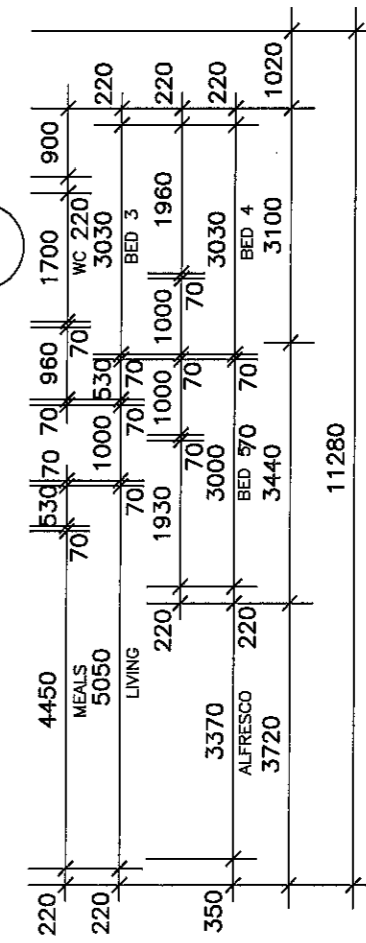
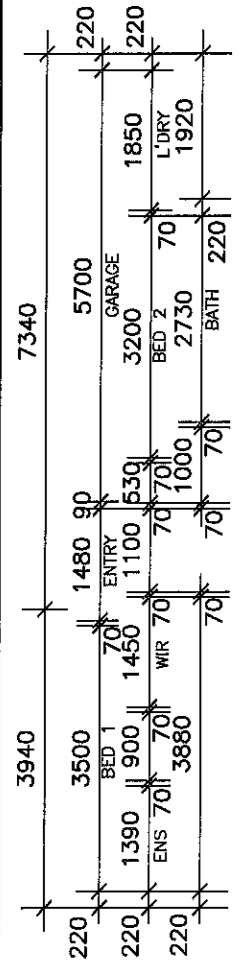
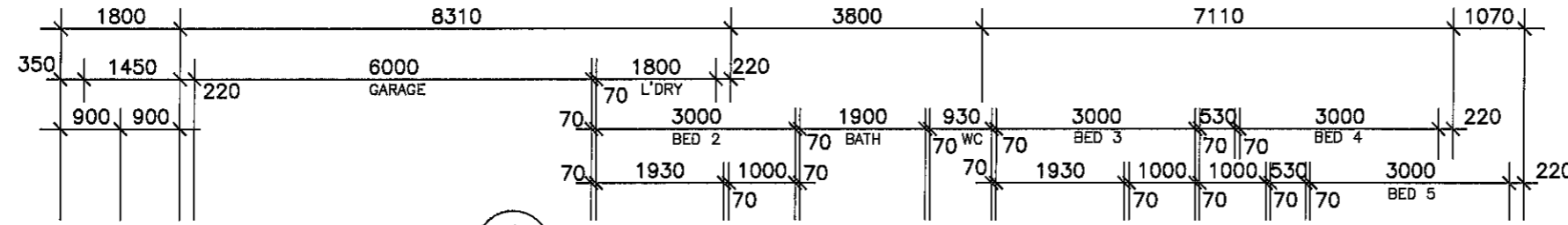


AREA	
LIVING	199.9
PORCH	3.2
ALFRESCO	13.6
TOTAL	216.7sq.m.
AREA OF SITE	494 sq.m.
SITE COVER	43.9%

TERMITE TREATED FRAME

NOTE
DRAWING SYMBOLS USED ON THIS
DRAWING ARE NOT TRUE REPRESENTATION
OF ITEMS INCLUDED IN CONTRACT.
REFER TO CONTRACT FOR SPECIFIED ITEMS

- APPROVED SMOKE DETECTOR LOCATED ON OR NEAR CEILING TO COMPLY WITH AS. 3786
- SOLID WALLS INDICATE TIMBER CONSTRUCTION
- HATCHED WALLS INDICATE MASONRY CONSTRUCTION



MANCORN
QUALITY HOMES

PO Box 1305
Caboolture Qld 4510
Office (07) 54952011
Fax: (07) 54952677
ACN: 065 955 179

NOTE :
* ALL CONSTRUCTION TO BE IN ACCORDANCE WITH BUILDING CODE OF AUSTRALIA AND AS. 1684.2 - 1999 TIMBER FRAMING MANUAL.
* WINDOW CODES DENOTE HEIGHT x WIDTH e.g. 1218 - 1200 HIGH x 1800 WIDE.
* DIMENSIONS TO BE VERIFIED BY CONTRACTORS PRIOR TO PREPARATION OF SHOP DRAWINGS OR MANUFACTURING. DIMENSIONS TAKE PREFERENCE OVER SCALE.

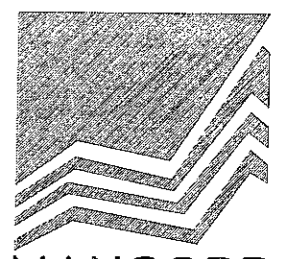
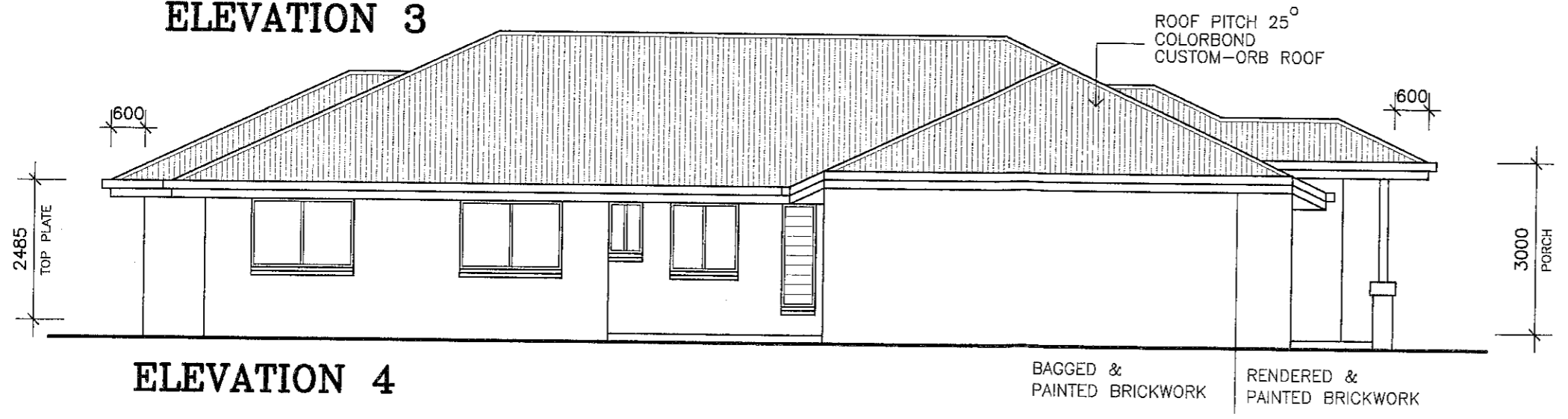
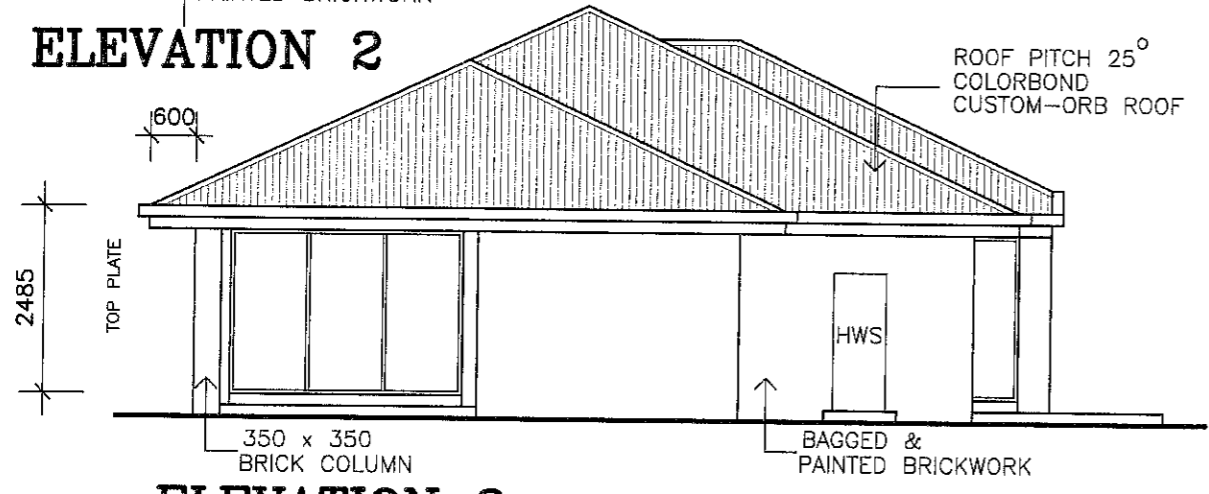
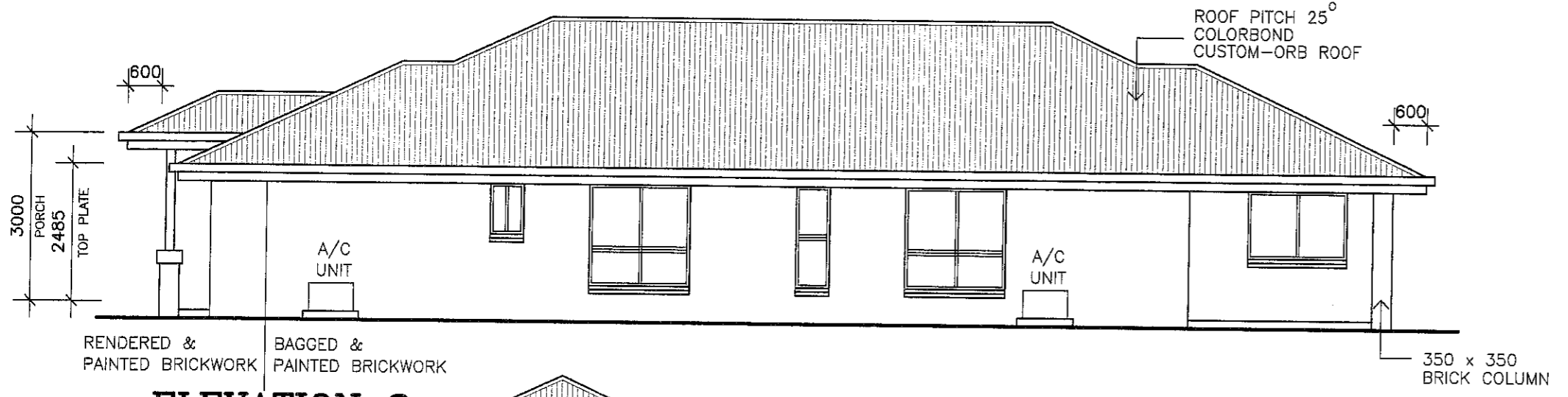
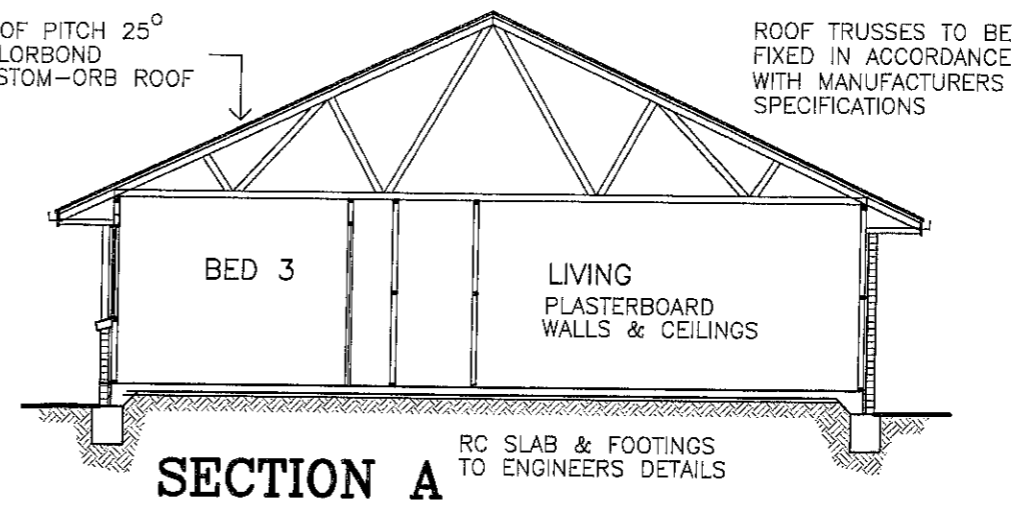
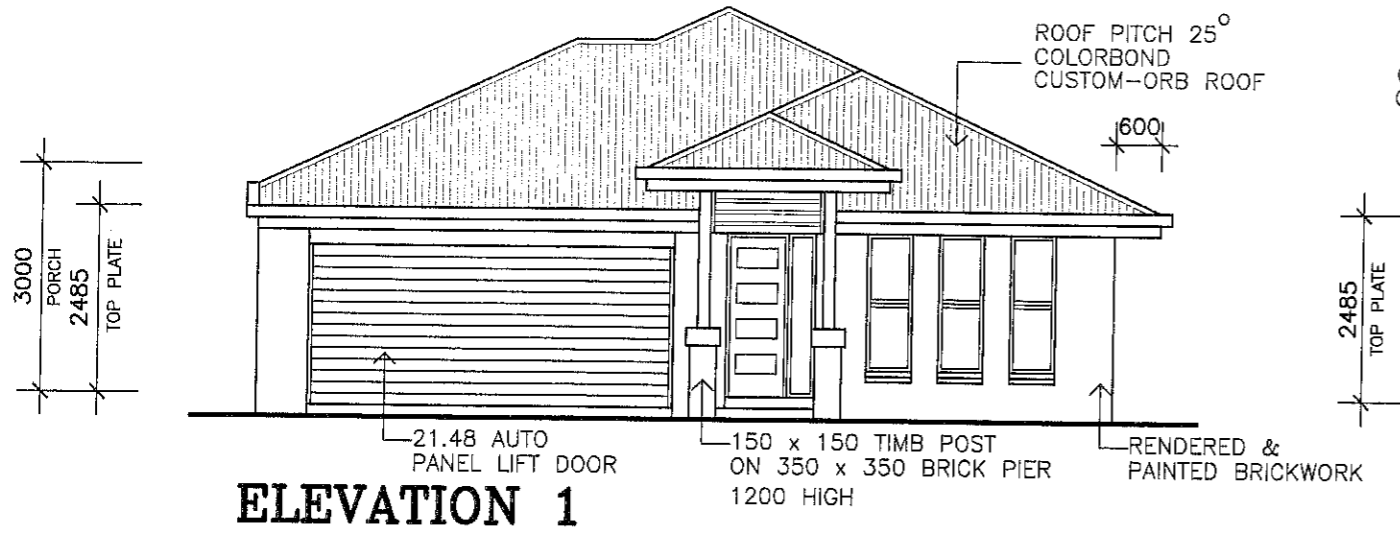
© 2013 MANCORN
CLIENT
MANCORN QUALITY HOMES.
PROJECT
PROPOSED RESIDENCE
LOCATION
**LOT 299
BIRKDALE CIRCUIT,
NORTH LAKES.**

AMENDMENTS

ISSUE	DATE	DESCRIPTION
A	19/02/13	PRELIMINARY

FLOOR PLAN
SCALE 1:100

DRAWN: A.WATTS CHECKED:
DATE: 19/02/13 SCALE: AS SHOWN
JOB NO. SHEET No. 2 OF 3



MANCORN
QUALITY HOMES

PO Box 1305
Caboolture Qld 4510
Office (07) 54952011
Fax: (07) 54952677
ACN: 065 955 179

NOTE :

- * ALL CONSTRUCTION TO BE IN ACCORDANCE WITH BUILDING CODE OF AUSTRALIA AND AS. 1684.2 - 1999 TIMBER FRAMING MANUAL.
- * WINDOW CODES DENOTE HEIGHT x WIDTH e.g. 1218 - 1200 HIGH x 1800 WIDE.
- * DIMENSIONS TO BE VERIFIED BY CONTRACTORS PRIOR TO PREPARATION OF SHOP DRAWINGS OR MANUFACTURING. DIMENSIONS TAKE PREFERENCE OVER SCALE.

©2013 MANCORN

CLIENT
MANCORN QUALITY HOMES.

PROJECT
PROPOSED RESIDENCE

LOCATION
**LOT 299
BIRKDALE CIRCUIT,
NORTH LAKES.**

AMENDMENTS

ISSUE	DATE	DESCRIPTION
A	19/02/13	PRELIMINARY

DRAWN: A.WATTS CHECKED:
DATE: 19/02/13 SCALE: AS SHOWN
JOB NO. SHEET No. 3 OF 3