

**MANCORP**  
QUALITY HOMES

PO Box 1305  
Caboolture Qld 4510  
Office (07) 54952011  
Fax: (07) 54952677  
ACN: 065 955 179

NOTE :  
 \* ALL CONSTRUCTION TO BE IN ACCORDANCE WITH BUILDING CODE OF AUSTRALIA AND AS. 1684.2 - 1999 TIMBER FRAMING MANUAL.  
 \* WINDOW CODES DENOTE HEIGHT x WIDTH e.g. 1218 - 1200 HIGH x 1800 WIDE.  
 \* DIMENSIONS TO BE VERIFIED BY CONTRACTORS PRIOR TO PREPARATION OF SHOP DRAWINGS OR MANUFACTURING. DIMENSIONS TAKE PREFERENCE OVER SCALE.

©2012 MANCORP

CLIENT  
**MANCORP QUALITY HOMES**

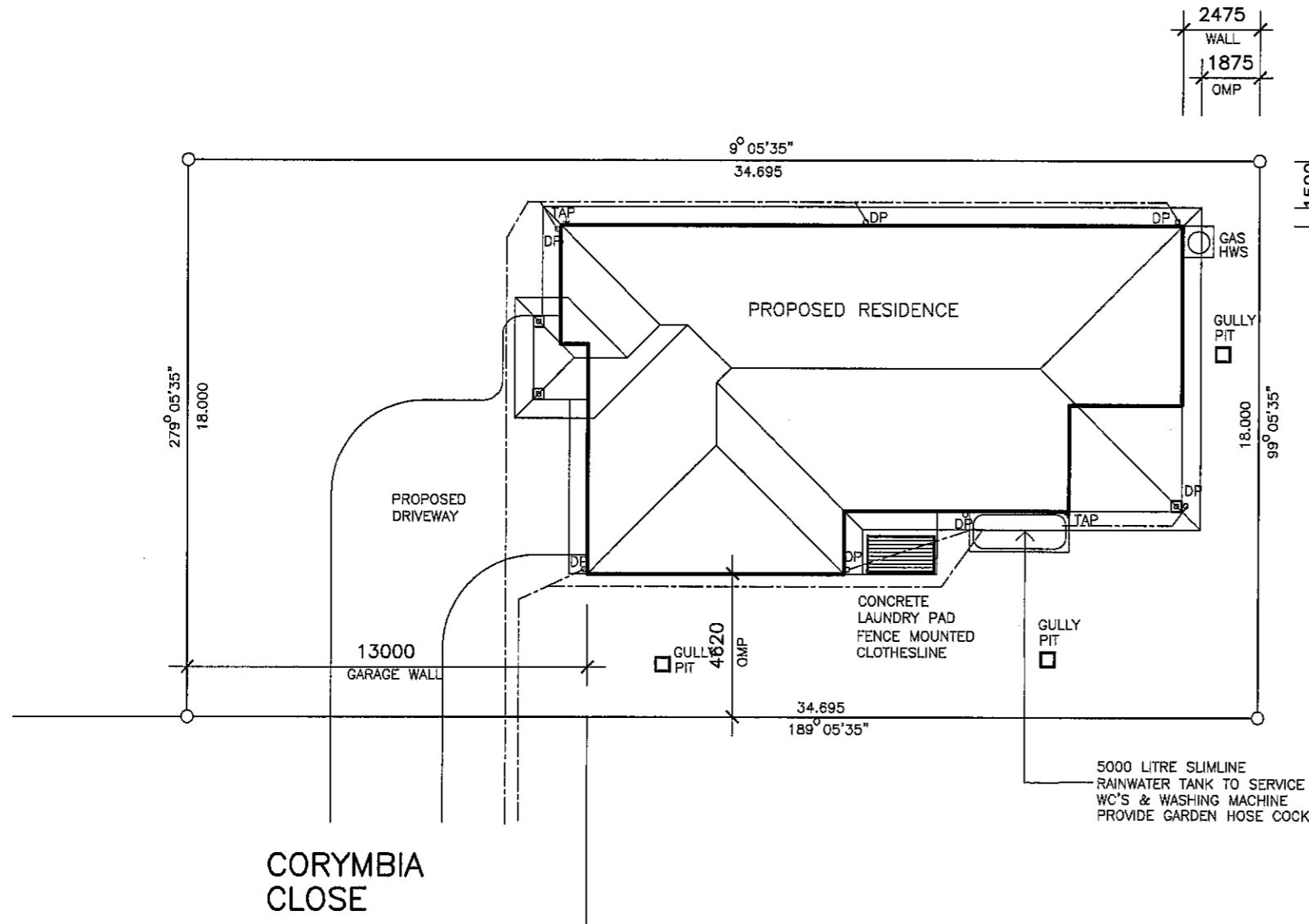
PROJECT  
**PROPOSED RESIDENCE**

LOCATION  
**LOT 1046  
CORYMBIA CLOSE,  
NARANGBA.**

AMENDMENTS

ISSUE	DATE	DESCRIPTION
A	21/01/12	PRELIMINARY

DRAWN: A.WATTS	CHECKED:
DATE: 21/01/12	SCALE: AS SHOWN
JOB NO.	SHEET No. 1 OF 3



NOTE  
DRAWING SYMBOLS USED ON THIS DRAWING ARE NOT TRUE REPRESENTATION OF ITEMS INCLUDED IN CONTRACT. REFER TO CONTRACT FOR SPECIFIED ITEMS

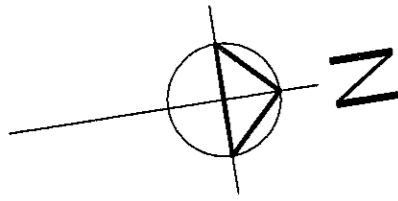
NOTE  
 STORMWATER TO DISCHARGE INTO EXIST. STORMWATER LINES & RETICULATE TO EXIST. LAWFULL POINT OF DISCHARGE  
 ALL STORMWATER LINES TO HAVE MINIMUM 100mm COVER.  
 STORMWATER LINES SHOWN ARE INDICATIVE ONLY  
 THE CONTRACTOR IS RESPONSIBLE TO ENSURE COMPLIANCE WITH AS.3500, AS.2870 AND BCA  
 LEVELS SHOWN REFERENCED TO AHD

AREA	
LIVING	185.4
PORCH	4.0
ALFRESCO	12.6
TOTAL	202.0sq.m.
AREA OF SITE	625 sq.m.
SITE COVER	32.3%

**REAL PROPERTY DESCRIPTION**  
 LOT 1046 ON SP  
 PARISH : BURPENGARY  
 COUNTY: STANLEY  
 AREA : 625 sq.m.



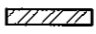
**SITE PLAN**

SCALE 1: 200



AREA	
LIVING	185.4
PORCH	4.0
ALFRESCO	12.6
TOTAL	202.0sq.m.

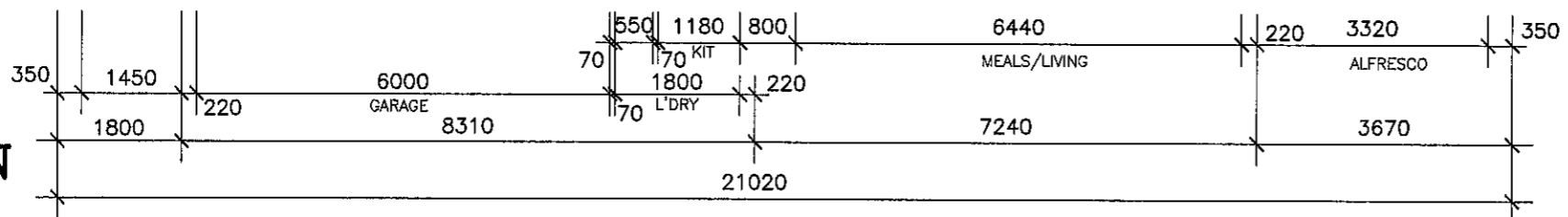
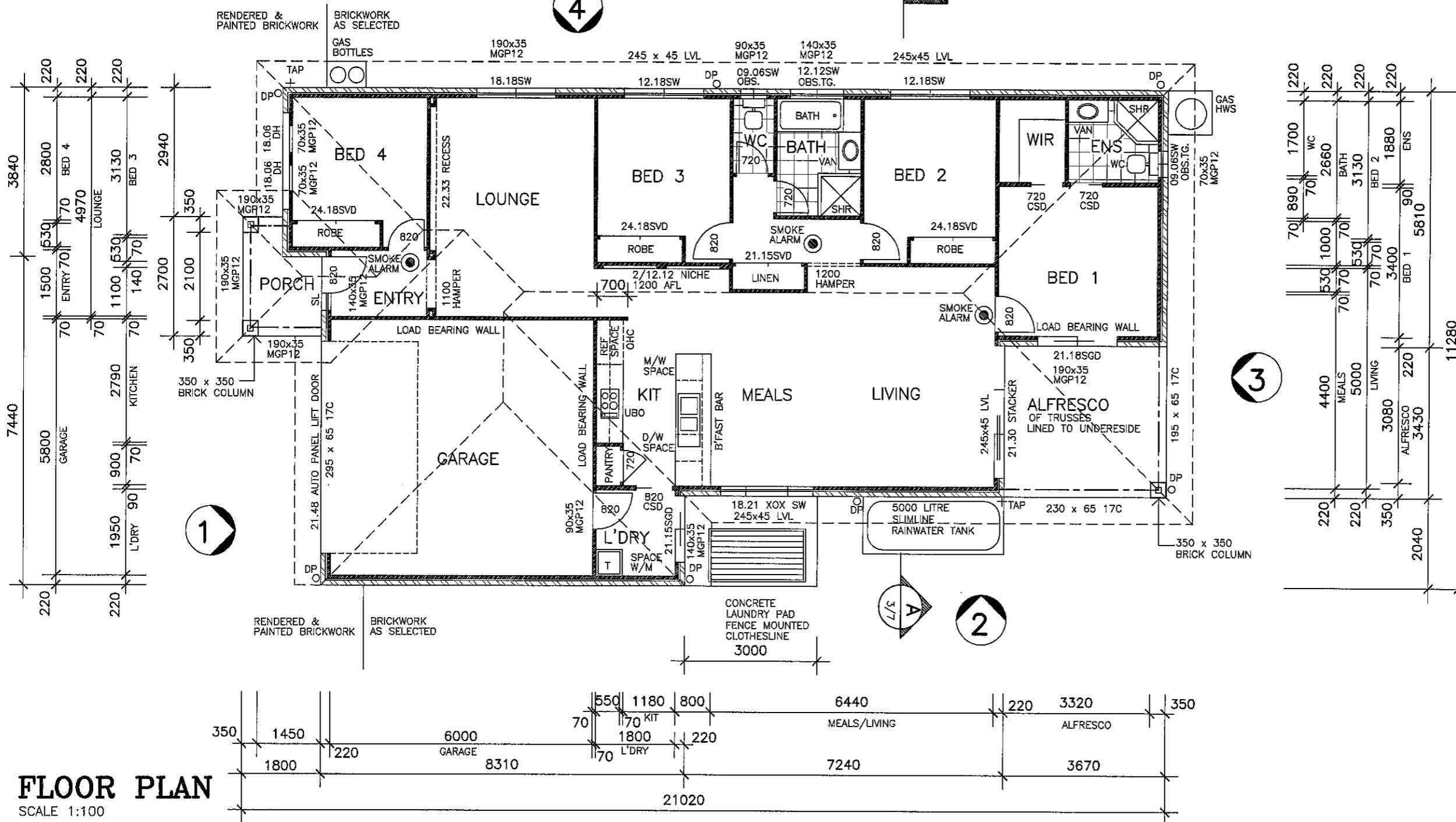
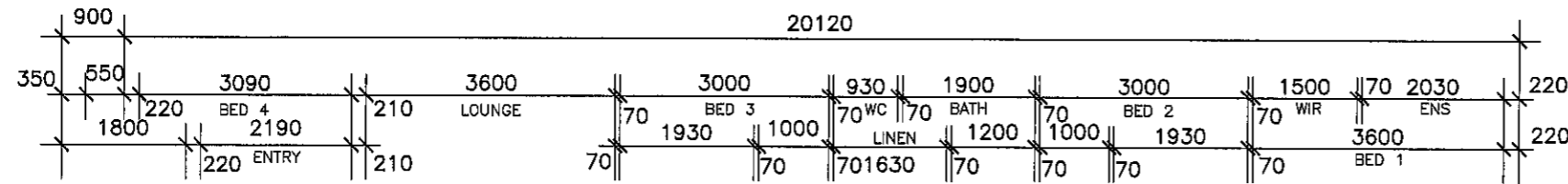
NOTE  
DRAWING SYMBOLS USED ON THIS  
DRAWING ARE NOT TRUE REPRESENTATION  
OF ITEMS INCLUDED IN CONTRACT.  
REFER TO CONTRACT FOR SPECIFIED ITEMS

 APPROVED SMOKE DETECTOR LOCATED ON OR NEAR CEILING TO COMPLY WITH AS. 3786  
 SOLID WALLS INDICATE TIMBER CONSTRUCTION  
 HATCHED WALLS INDICATE MASONRY CONSTRUCTION



PO Box 1305  
 Caboolture Qld 4510  
 Office (07) 54952011  
 Fax: (07) 54952677  
 ACN: 065 955 179

NOTE :  
 \* ALL CONSTRUCTION TO BE IN ACCORDANCE WITH BUILDING CODE OF AUSTRALIA AND AS. 1684.2 - 1999 TIMBER FRAMING MANUAL.  
 \* WINDOW CODES DENOTE HEIGHT x WIDTH e.g. 1218 - 1200 HIGH x 1800 WIDE.  
 \* DIMENSIONS TO BE VERIFIED BY CONTRACTORS PRIOR TO PREPARATION OF SHOP DRAWINGS OR MANUFACTURING. DIMENSIONS TAKE PREFERENCE OVER SCALE.



**FLOOR PLAN**  
SCALE 1:100

© 2012 MANCORP

CLIENT  
**MANCORP QUALITY HOMES**

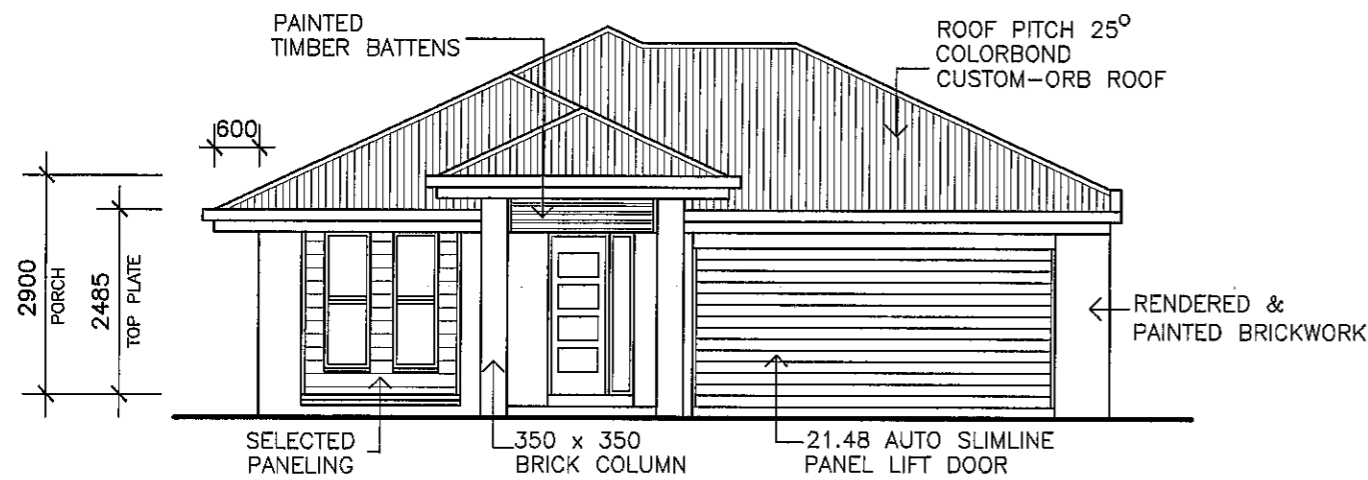
PROJECT  
**PROPOSED RESIDENCE**

LOCATION  
**LOT 1046  
CORYMBIA CLOSE,  
NARANGBA.**

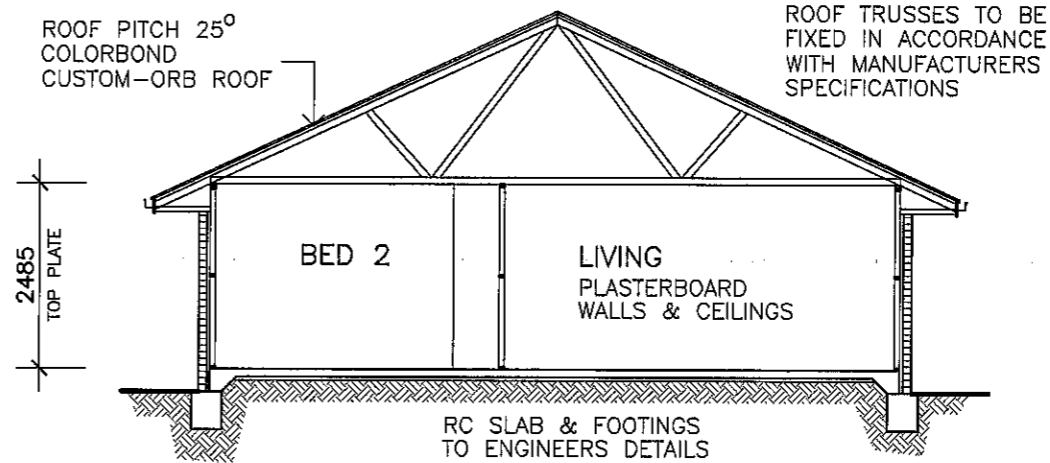
AMENDMENTS

ISSUE	DATE	DESCRIPTION
A	21/01/12	PRELIMINARY

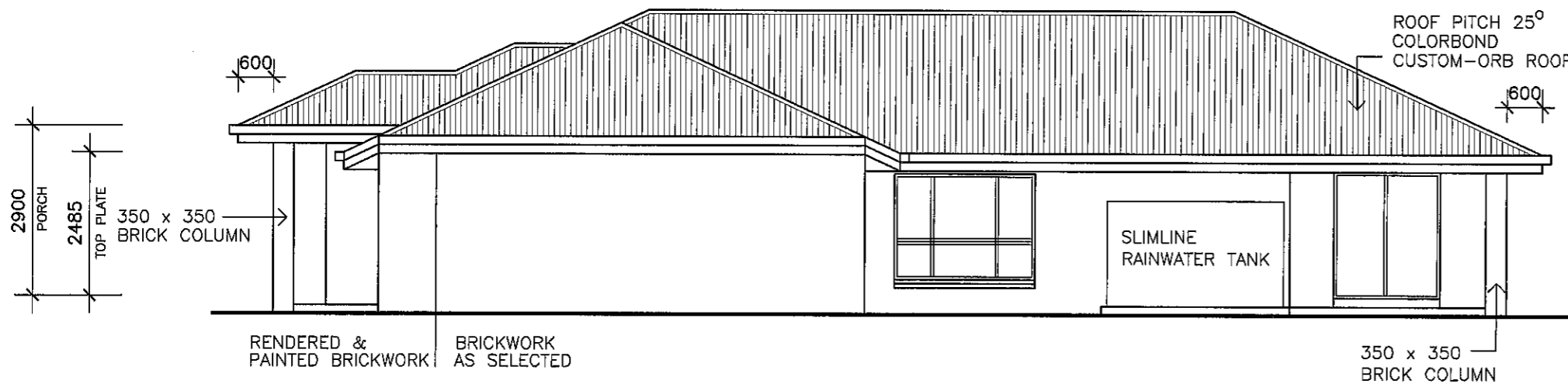
DRAWN: A.WATTS	CHECKED:
DATE: 21/01/12	SCALE: AS SHOWN
JOB NO.	SHEET No. 2 OF 3



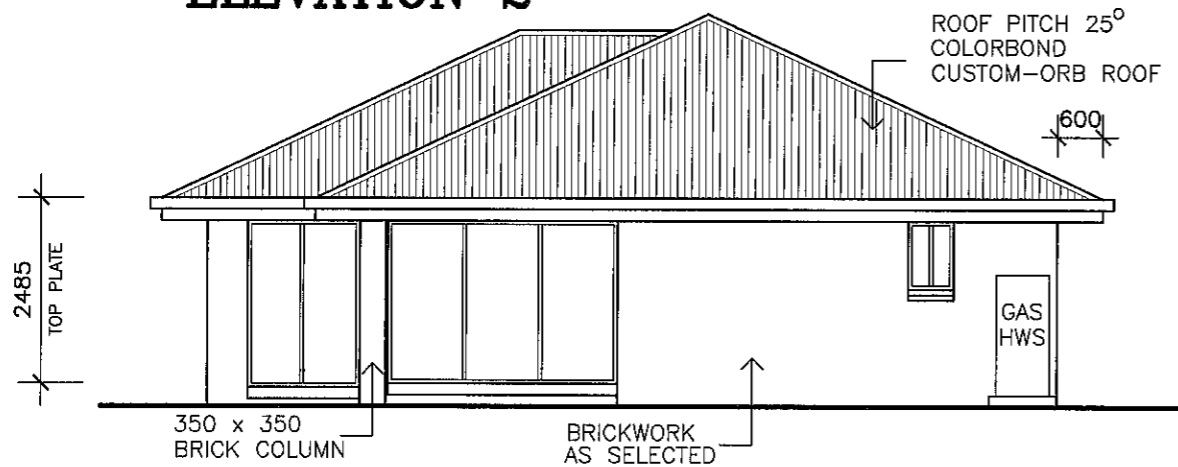
**ELEVATION 1**



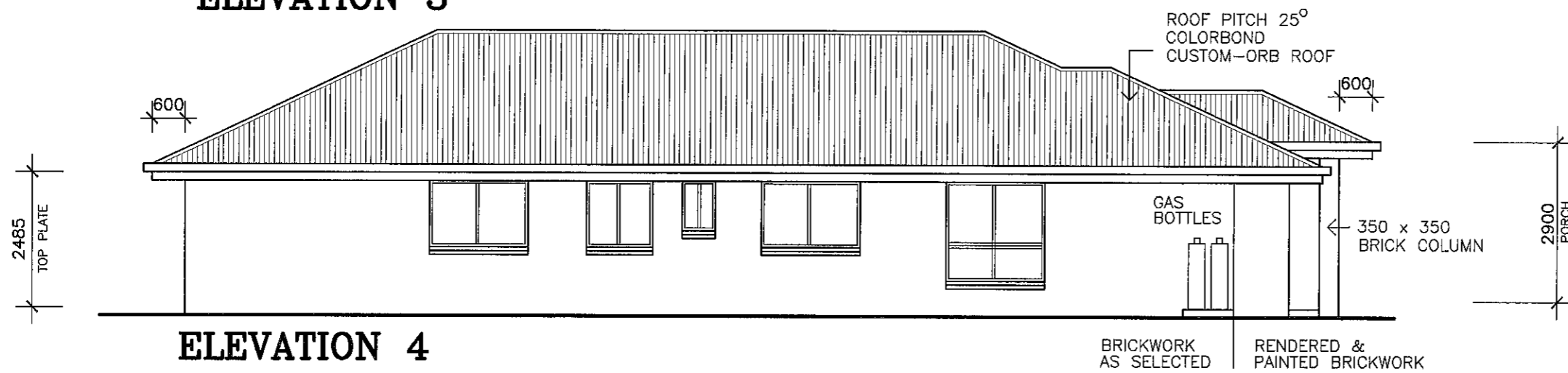
**SECTION A**



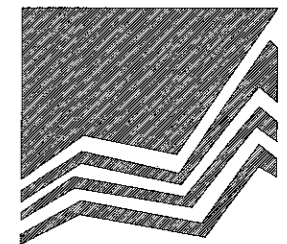
**ELEVATION 2**



**ELEVATION 3**



**ELEVATION 4**



**MANCORP**  
QUALITY HOMES

PO Box 1305  
Coboolture Qld 4510  
Office (07) 54952011  
Fax: (07) 54952677  
ACN: 065 955 179

NOTE :  
\* ALL CONSTRUCTION TO BE IN ACCORDANCE WITH BUILDING CODE OF AUSTRALIA AND AS. 1684.2 - 1999 TIMBER FRAMING MANUAL.  
\* WINDOW CODES DENOTE HEIGHT x WIDTH e.g. 1218 - 1200 HIGH x 1800 WIDE.  
\* DIMENSIONS TO BE VERIFIED BY CONTRACTORS PRIOR TO PREPARATION OF SHOP DRAWINGS OR MANUFACTURING. DIMENSIONS TAKE PREFERENCE OVER SCALE.

©2012 MANCORP

CLIENT  
**MANCORP QUALITY HOMES**

PROJECT  
**PROPOSED RESIDENCE**

LOCATION  
**LOT 1046  
CORYMBIA CLOSE,  
NARANGBA.**

AMENDMENTS

ISSUE	DATE	DESCRIPTION
A	21/01/12	PRELIMINARY

DRAWN: A.WATTS	CHECKED:
DATE: 21/01/12	SCALE: AS SHOWN
JOB NO.	SHEET No. 3 OF 3